

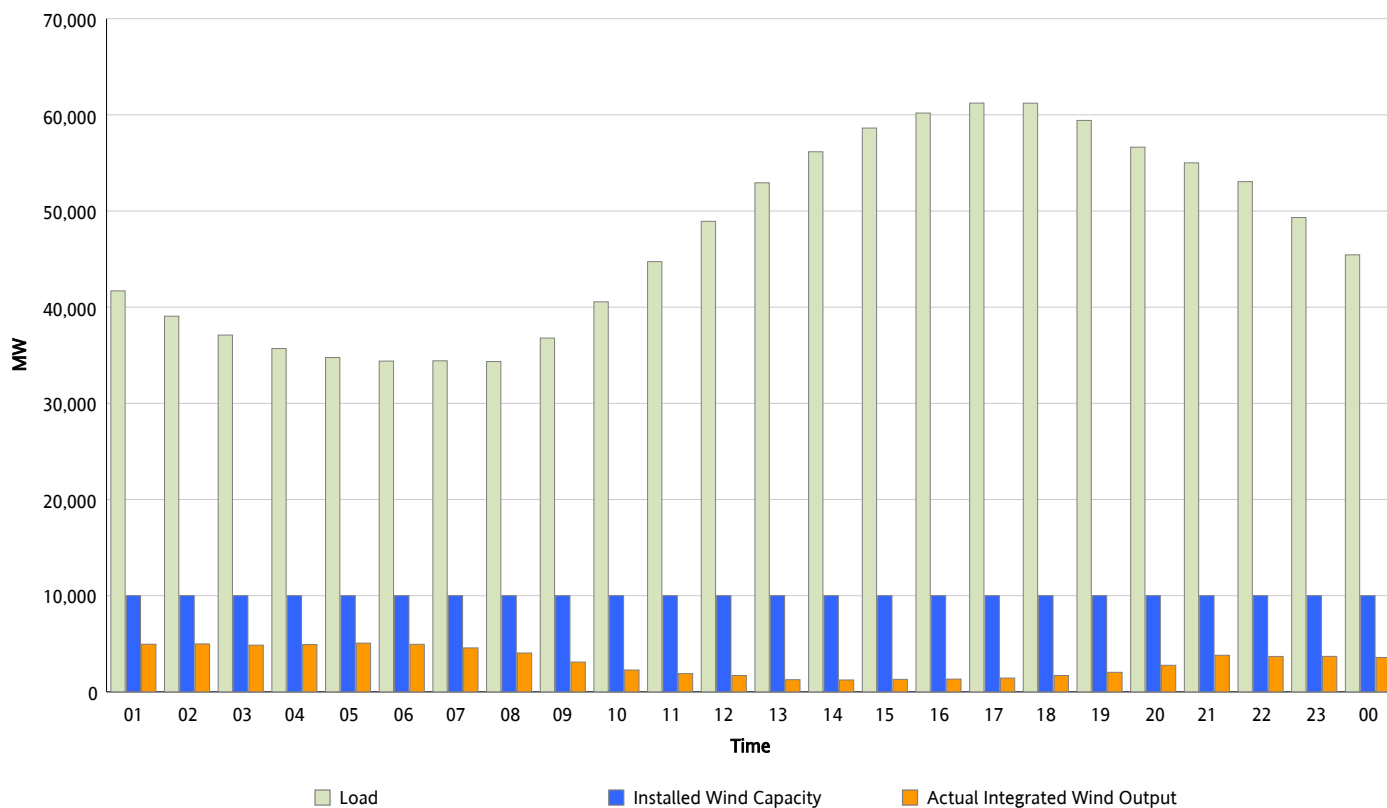


ERCOT Grid Operations

Wind Integration Report : 08/12/2012

Peak Load	61,224 MW
Load Peak Hour (HE)	17
Wind Over Peak	1,437 MW
Wind Record 06/19/12	8,368 MW
Max Wind Value*	5,181 MW
Wind Peak Time	04:32
Wind Integration %	14.92 %

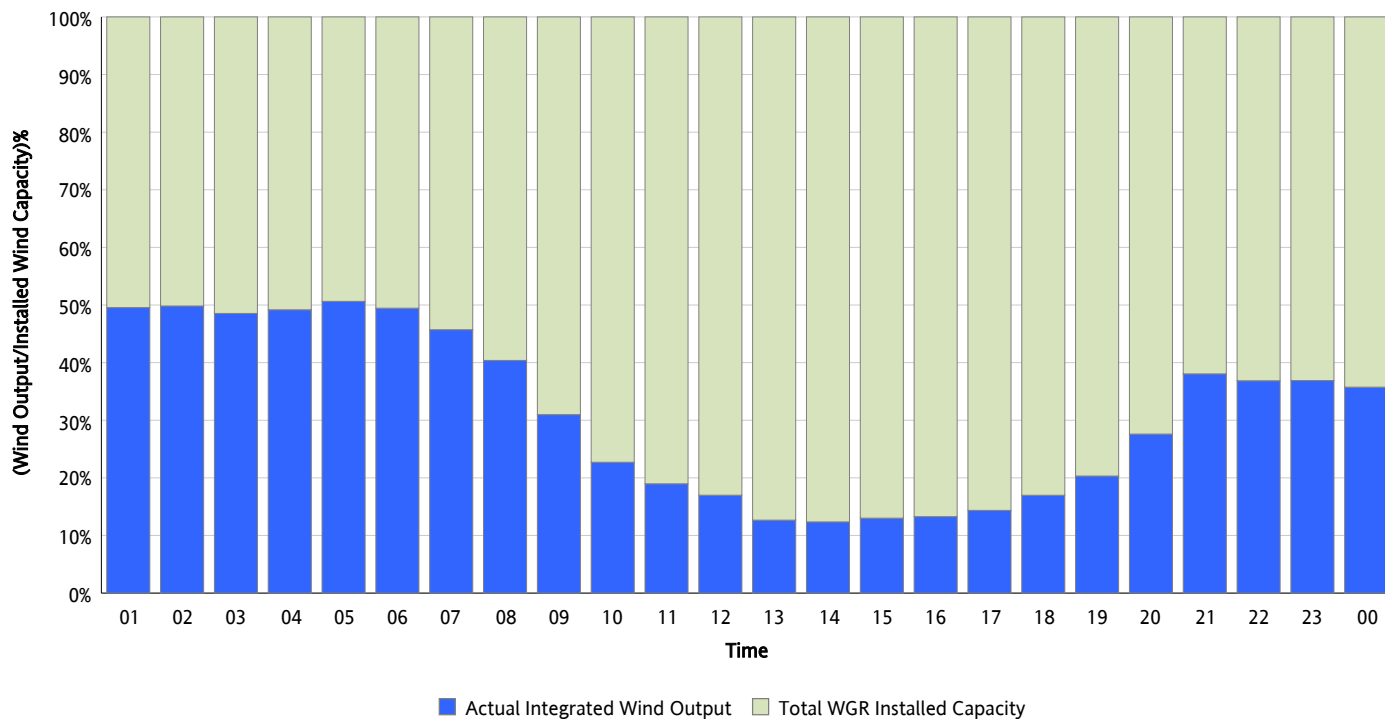
Hourly Average Actual Load vs. Actual Wind Output
08/12/2012



** Wind Record and Wind Max represent instantaneous values and the rest of the values are integrated over the hour*

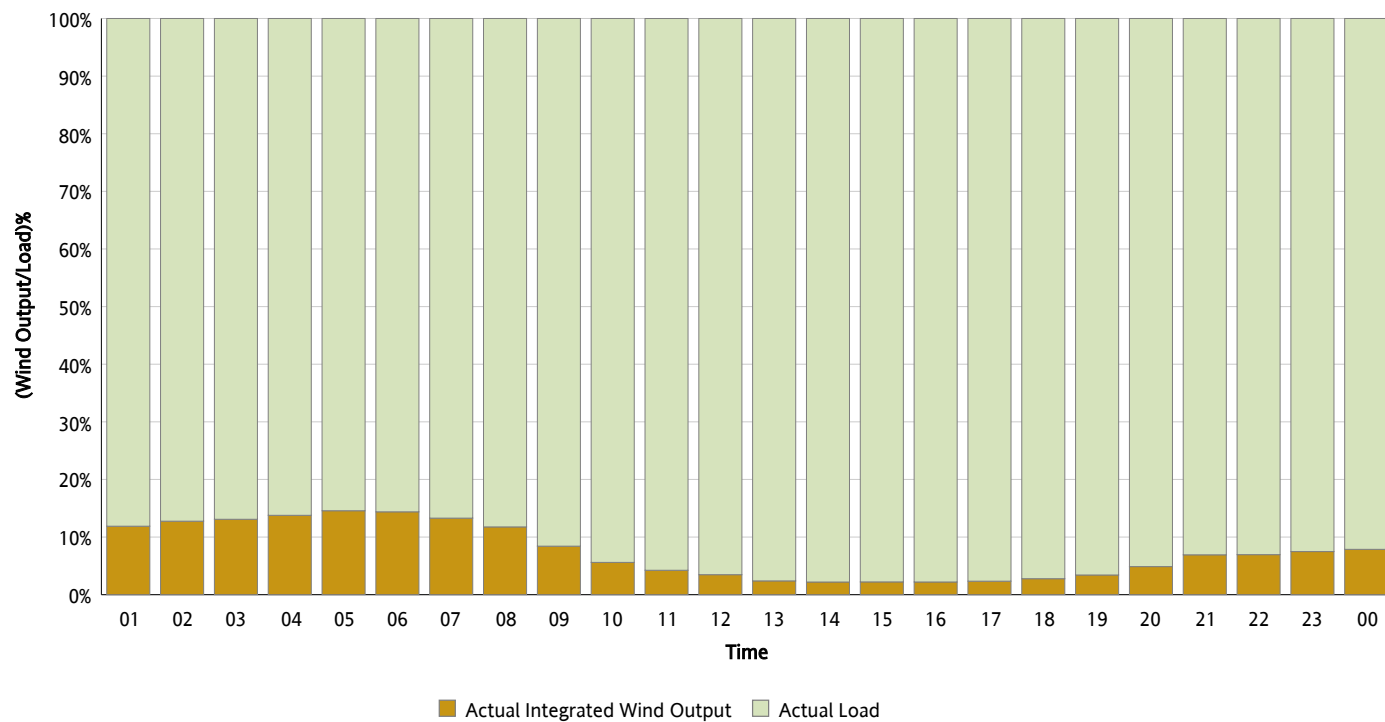
Actual Wind Output as a Percentage of the Total Installed Wind Capacity

08/12/2012



Actual Wind Output as a Percentage of the ERCOT Load

08/12/2012



ERCOT Load vs. Actual Wind Output

08/05/2012 - 08/12/2012

